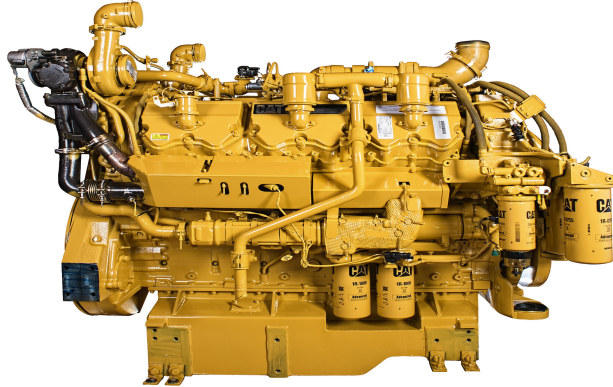


## CAT Rail Engine C32 ACERT

<https://www.zepelin-powersystems.com/de/en/>



Maximum Power	950 kW
Power Range	839 kW, 895 kW, 900 kW, 950 kW
Minimum Power	839 kW
Bore	145 mm
Stroke	162 mm
Displacement	32,1 l
Compression Ratio	15,0:1
Rated Speed	1800 rpm
Emissions	EU Stage V
Dry Weight	2.946 kg
Length	1.957 mm
Width	1.278 mm
Height	1.544 mm

This offer is without obligation. The offer is based on our General Terms and Conditions of Sale and Delivery. Changes to equipment and accessories required for technical reasons may be made at any time. Subject to errors, changes and intermediate sale. Statutory value-added tax shall be added to all price.

## CAT Rail Engine C32 ACERT

