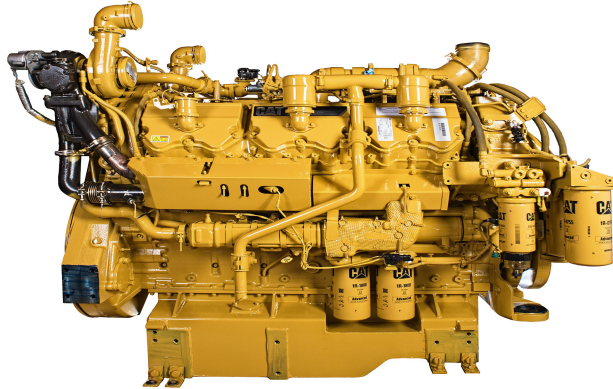


CAT Rail Engine C27 ACERT Rear Turbo

<https://www.zeppelin-powersystems.com/de/en/>



Power Range	708 kW (950 bhp)
Maximum Power	708 kW
Minimum Power	708 kW
Emissions	EU Stage V
Rated Speed	1800 rpm
Bore	137,7 mm
Stroke	152,4 mm
Compression Ratio	16,0:1
Displacement	27 l
Dry Weight	2.790 kg
Length	1.896 mm
Width	1.264 mm
Height	1.557 mm

This offer is without obligation. The offer is based on our General Terms and Conditions of Sale and Delivery. Changes to equipment and accessories required for technical reasons may be made at any time. Subject to errors, changes and intermediate sale. Statutory value-added tax shall be added to all price.

CAT Rail Engine C27 ACERT Rear Turbo

