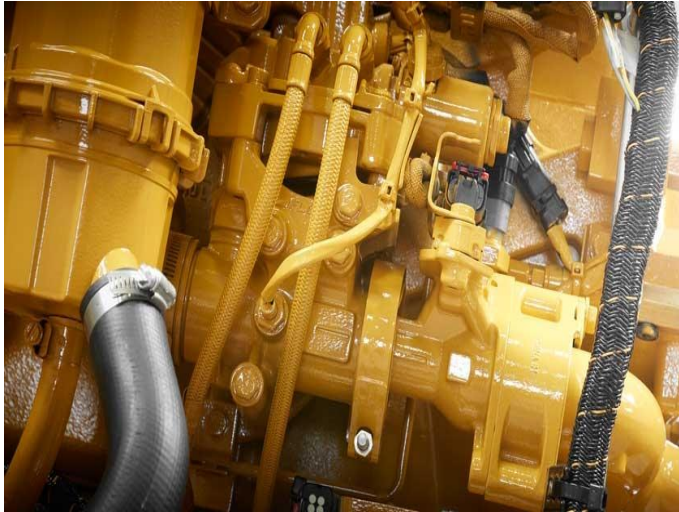


## CAT Rail Engine C27



<https://www.zepelin-powersystems.com/de/en/>

Maximum Power	783 kW
Minimum Power	597 kW
Power Range	597 kW - 783 kW
Emissions	U.S. EPA Tier 2, U.S. EPA Tier 4 interim
Rated Speed	1800 rpm - 2100 rpm

This offer is without obligation. The offer is based on our General Terms and Conditions of Sale and Delivery. Changes to equipment and accessories required for technical reasons may be made at any time. Subject to errors, changes and intermediate sale. Statutory value-added tax shall be added to all price.