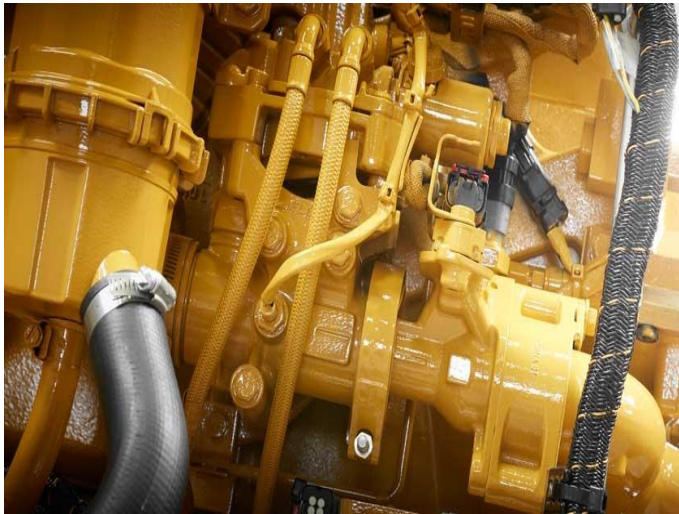


CAT Rail Engine 3516B HD



<https://www.zeppelin-powersystems.com/de/en/>

Emissions	Unregulated for 2060 kW, non-certified for 2100 kW, EPA Tier 2 for 2240 kW, UIC II for 2240 kW
Maximum Power	2.240 kW
Minimum Power	2.060 kW
Power Range	2060 kW - 2240 kW
Rated Speed	1800 rpm

This offer is without obligation. The offer is based on our General Terms and Conditions of Sale and Delivery. Changes to equipment and accessories required for technical reasons may be made at any time. Subject to errors, changes and intermediate sale. Statutory value-added tax shall be added to all price.