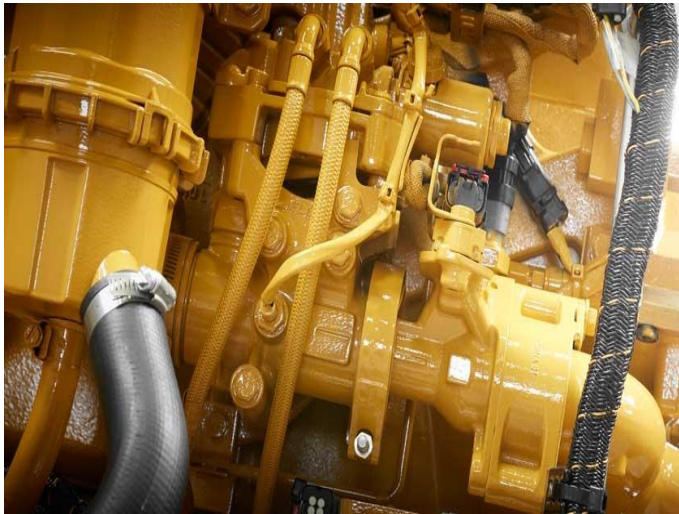


## CAT Rail Engine 3516B



<https://www.zeppelin-powersystems.com/de/en/>

Emissions	Non-certified for 1510 kW, unregulated for 1678 kW, UIC II for all others
Maximum Power	2.060 kW
Minimum Power	1.510 kW
Power Range	1510 kW - 2060 kW
Rated Speed	1800 rpm

This offer is without obligation. The offer is based on our General Terms and Conditions of Sale and Delivery. Changes to equipment and accessories required for technical reasons may be made at any time. Subject to errors, changes and intermediate sale. Statutory value-added tax shall be added to all price.