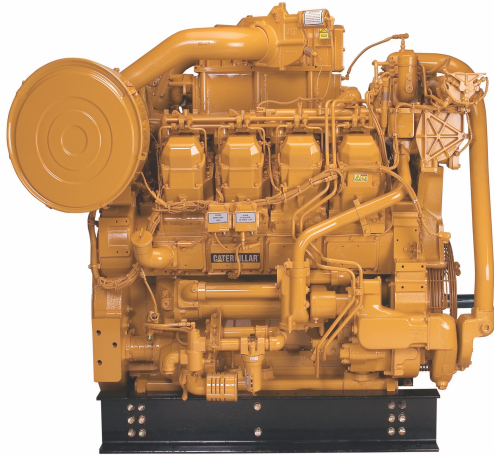


CAT Rail Engine 3508C

<https://www.zepelin-powersystems.com/de/en/>



| | |
|-------------------|------------------------------|
| Power Range | 920-1000 kW (1234 -1341 bhp) |
| Maximum Power | 1.000 kW |
| Minimum Power | 920 kW |
| Emissions | EU Stage IIIA |
| Rated Speed | 1800 rpm |
| Bore | 170 mm |
| Stroke | 190 mm |
| Displacement | 34,5 l |
| Compression Ratio | 14,7 |
| Dry Weight | 4.582 kg |
| Length | 1.885,8 mm |
| Width | 1.562,9 mm |
| Height | 1.959,9 mm |

This offer is without obligation. The offer is based on our General Terms and Conditions of Sale and Delivery. Changes to equipment and accessories required for technical reasons may be made at any time. Subject to errors, changes and intermediate sale. Statutory value-added tax shall be added to all price.

CAT Rail Engine 3508C

