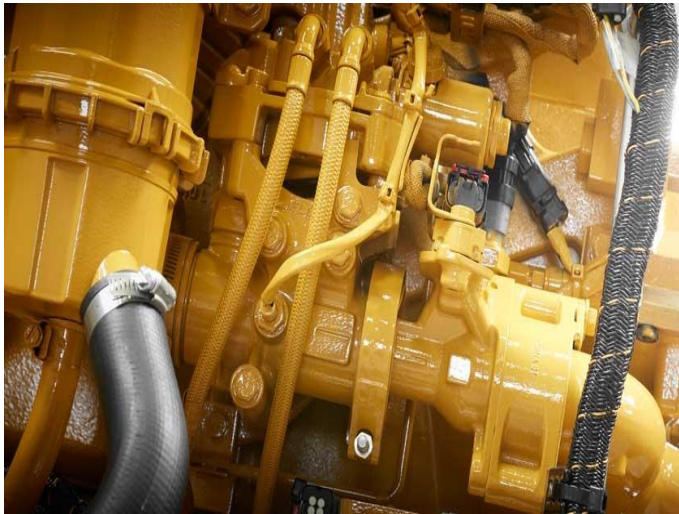


## CAT Rail Engine 3508B



<https://www.zeppelin-powersystems.com/de/en/>

Maximum Power	970 kW
Minimum Power	820 kW
Power Range	820 kW - 970 kW
Rated Speed	1800 rpm - 2100 rpm
Emissions	UIC II

This offer is without obligation. The offer is based on our General Terms and Conditions of Sale and Delivery. Changes to equipment and accessories required for technical reasons may be made at any time. Subject to errors, changes and intermediate sale. Statutory value-added tax shall be added to all price.