

CAT Gas Generator G3520H

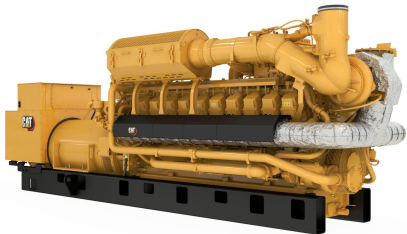
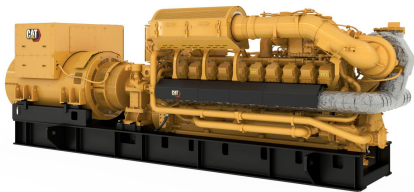
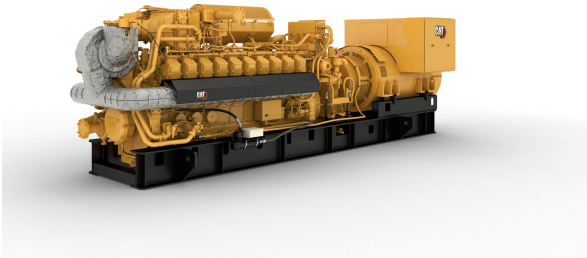
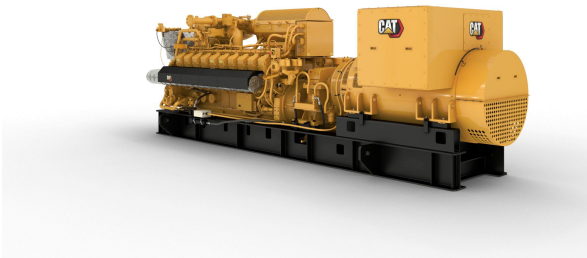
<https://www.zepelin-powersystems.com/de/en/>



Maximum Electrical Efficiency	45,2%
Displacement	97,6 l
Bore	170 mm
Stroke	215 mm
Compression Ratio	12,1:1
Fuel Type	Natural Gas
Maximum Power	2.526 kW
Rated Speed	1500 rpm
Minimum Power	1.247 kW

This offer is without obligation. The offer is based on our General Terms and Conditions of Sale and Delivery. Changes to equipment and accessories required for technical reasons may be made at any time. Subject to errors, changes and intermediate sale. Statutory value-added tax shall be added to all price.

CAT Gas Generator G3520H



CAT Gas Generator G3520H

