

CAT G3520C

<https://www.zeppelin-powersystems.com/de/en/>



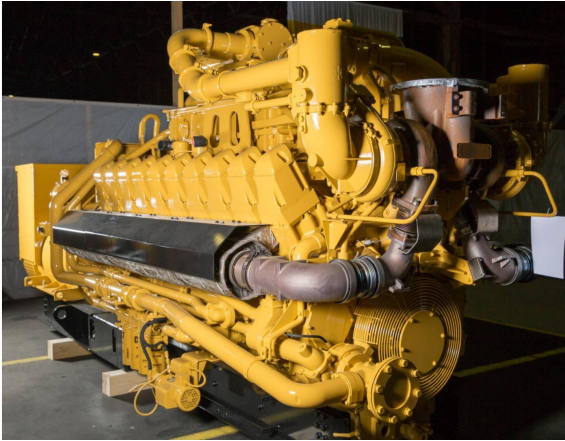
Holger Uphoff
Phone: +49 4213877560
Mobile: +49 15209057498
holger.uphoff@zeppelin.com

Reinhard Grünker
Phone: +49 4213877566
Mobile: +49 1712322285
reinhard.gruenker@zeppelin.com

Availability	Available
Certification	Dealer Certified
Code	DLC
Running Hours	0 h
Serial Number	MAD00101
Status	Used
G-Number	G001367
Year	2.017
Manufacturer	CAT
Power Dual	
Power Fuel	
Frequency	Hz
Power	kW
Rating	kVA
Type	
Speed	RPM
Weight	kgs
Voltage	V
Postal Code	28.217
City	Bremen
Country	DE

This offer is without obligation. The offer is based on our General Terms and Conditions of Sale and Delivery. Changes to equipment and accessories required for technical reasons may be made at any time. Subject to errors, changes and intermediate sale. Statutory value-added tax shall be added to all price.

CAT G3520C



ZEPPELIN			
GENERATORSET PPD 0 2008			
Serial Number: 2122 1-000			
YEAR 2017			
ENGINE MODEL 9 TRAK			
SERIAL NUMBER 324			
GENERATOR MODEL 9648			
SERIAL NUMBER 222			
1000 KVA			
1000 KW			
1.80 COOL			
GENERATOR DATA 50 HERTZ			
3 PHASES 4 WIRE 4 WIRE			
GENERATOR 4 WIRE 2000A			
400 VOLTS 2000 AMP			
25 VOLTS 4.75 AMP			
400 VOLTAGE 1000 RPM			
3 CONTINUOUS			
MAXIMUM TEMPERATURE RISE 100°C BY RESISTANCE AT 0 AMBIENT 1000 METERS ALTITUDE CLASS F POLLUTION			
NOTES FOR: ALL DATA TAKEN FROM THE GENERATOR DATA SHEET. THE DATA SHEET IS ATTACHED TO THE GENERATOR SET. IT IS AN ATTACHMENT OF THE GENERATOR SET. IT IS AN ATTACHMENT OF THE GENERATOR SET. IT IS AN ATTACHMENT OF THE GENERATOR SET.			
GENERATOR SERIAL NUMBER 222			
ENGINE SERIAL NUMBER 324			