

## CAT G3516 \_ PPO G1000

<https://www.zeppelin-powersystems.com/de/en/>



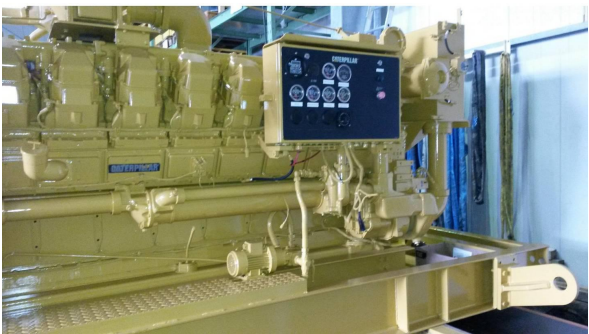
Holger Uphoff  
Phone: +49 4213877560  
Mobile: +49 15209057498  
[holger.uphoff@zeppelin.com](mailto:holger.uphoff@zeppelin.com)

Reinhard Grünker  
Phone: +49 4213877566  
Mobile: +49 1712322285  
[reinhard.gruenker@zeppelin.com](mailto:reinhard.gruenker@zeppelin.com)

Availability	Available
Certification	Dealer Certified
Code	DLC
Running Hours	0 h
Serial Number	4EK00027
Status	Used
G-Number	G001038
Year	2.017
Manufacturer	CAT
Power Dual	
Power Fuel	
Frequency	Hz
Power	kW
Rating	kVA
Type	
Speed	RPM
Weight	kgs
Voltage	V
Postal Code	28.217
City	Bremen
Country	DE

**This offer is without obligation. The offer is based on our General Terms and Conditions of Sale and Delivery. Changes to equipment and accessories required for technical reasons may be made at any time. Subject to errors, changes and intermediate sale. Statutory value-added tax shall be added to all price.**

CAT G3516 \_ PPO G1000



CAT G3516 \_ PPO G1000

ZEPPELIN

GENERATORSET

PPG G 1000

SERIAL NUMBER

27502 1019

YEAR

2017

ENGINE MODEL

S 9318

SERIAL NUMBER

9043027

GENERATOR MODEL

AVN

SERIAL NUMBER

01000-100110014

1075

KVA

1000

KV

0.80

COEF

50

HERTZ

GENERATOR DATA

3

PHASES

6

WIRE

X

WYE

DELTA

X

SERIES

PARALLEL

EXCITATION

20

VOLTS

75

AMPS

400

PHASE

1000

MEVA

X

CONTROL

MAXIMUM TEMPERATURE RISE 100 °C BY RESISTANCE

AT 1 C AMBIENT 1000 METERS ALTITUDE

CLASS F INSULATION

EXCITATION

20

VOLTS

75

AMPS

400

PHASE

1000

MEVA

X

CONTROL

GENERATOR SERIAL NUMBER AND GENERATOR PART NUMBER FROM GENERATOR

01000-100110014

ENGINE SERIAL NUMBER

9043027

ASSEMBLED IN GERMANY