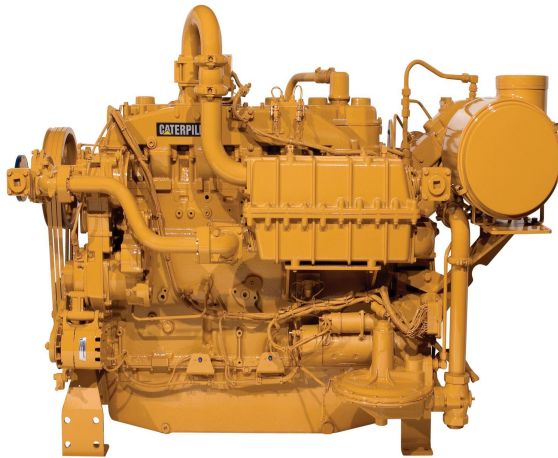


CAT G3406 Gas Compression Engine

<https://www.zeppelin-powersystems.com/de/en/>



Minimum Rating	160 ekW
Maximum Rating	242 ekW
Emissions	NSPS Site Compliant Capable
Displacement	14,59 l
Compression Ratio	9.4:1
Aspiration	Naturally Aspirated or Turbocharged-Aftercooled
Rotation from Flywheel End	Counterclockwise
Flywheel and Flywheel Housing	SAE No. 1
Flywheel Teeth	113
Weight - Dry	1.360,8 kg
Oil Change Interval	750 hours
Ignition, Protection	Altronic III
Stroke	165 mm
Bore	137 mm
Cooling System	37,9 l
Lube Oil System - Refill	75,7 l
Maximum Power	242 kW
Minimum Power	160 kW
Emissions	NSPS Site Compliant Capable

This offer is without obligation. The offer is based on our General Terms and Conditions of Sale and Delivery. Changes to equipment and accessories required for technical reasons may be made at any time. Subject to errors, changes and intermediate sale. Statutory value-added tax shall be added to all price.