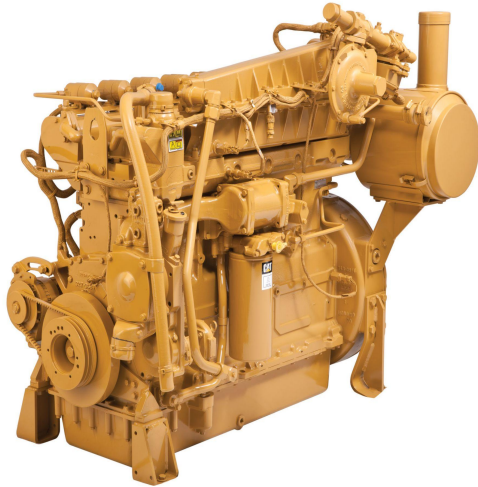


## CAT G3306B Gas Compression Engine

<https://www.zepelin-powersystems.com/de/en/>



Minimum Rating	108 ekW
Maximum Rating	157 ekW
Emissions	NSPS 2010
Displacement	10,5 l
Compression Ratio	10.5:1
Aspiration	Naturally Aspirated or Turbocharged-Aftercooled
Rotation from Flywheel End	Counterclockwise
Flywheel and Flywheel Housing	SAE No. 1
Flywheel Teeth	156
Weight - Dry	1.111 kg
Oil Change Interval	750 hours
Ignition, Protection	ADEM A4
Air/Fuel Ratio Control	ADEM A4
Stroke	152 mm
Bore	121 mm
Cooling System	20 l
Lube Oil System - Refill	44,5 l
Minimum Power	108 kW
Maximum Power	157 kW
Emissions	NSPS 2010

This offer is without obligation. The offer is based on our General Terms and Conditions of Sale and Delivery. Changes to equipment and accessories required for technical reasons may be made at any time. Subject to errors, changes and intermediate sale. Statutory value-added tax shall be added to all price.