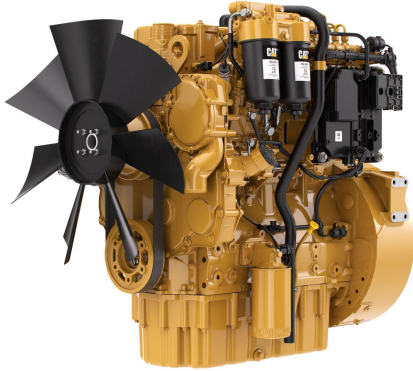


CAT Cat®-C4.4 Diesel Engine

<https://www.zepelin-powersystems.com/de/en/>



Maximum Power	106 kW
Maximum Torque	558 Nm @ 1600 rpm
Rated Speed	2200 rpm
Minimum Power	68 kW
Emissions	China Nonroad Stage III, Brazil MAR-1, UN ECE R96 Stage IIIA
Engine Configuration	Inline 4, 4-Stroke-Cycle Diesel
Bore	105 mm
Stroke	127 mm
Displacement	4,4 l
Compression Ratio	16.9:1
Aspiration	Turbocharged (T) or Turbocharged Aftercooled (TA)
Combustion System	Direct Injection
Rotation from Flywheel End	Counterclockwise
Aftertreatment	-
Length	631 mm
Width	626 mm
Height	958 mm
Weight - Net Dry - Basic Operating Engine Without Optional Attachments	360 kg

This offer is without obligation. The offer is based on our General Terms and Conditions of Sale and Delivery. Changes to equipment and accessories required for technical reasons may be made at any time. Subject to errors, changes and intermediate sale. Statutory value-added tax shall be added to all price.