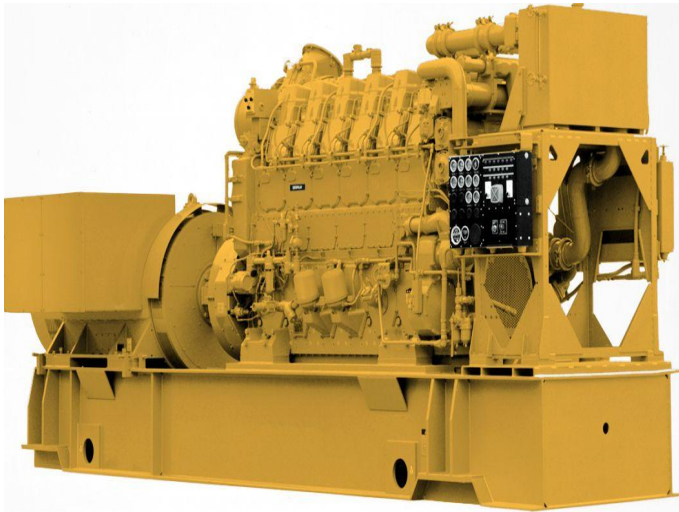


CAT Cat C280-6 Marine Generator Set



<https://www.zepelin-powersystems.com/de/en/>

| | |
|-------------------------|-------------------------------------|
| Minimum Rating | 1760 ekW (2200 kVA) |
| Maximum Rating | 1820 ekW (2275 kVA) |
| Frequency | 50 Hz or 60 Hz |
| Speed | 1000 rpm (50 hz) or 900 rpm (60 hz) |
| Aspiration | Turbocharged-Aftercooled |
| Bore | 280 mm |
| Stroke | 300 mm |
| Displacement | 111 l |
| Governor Type | Electronic |
| Fuel System | EUI |
| Compression Ratio 50 Hz | 13,1 |
| Compression Ratio 60 Hz | 13:1 |
| Engine Model | In-line 6, 4-Stroke-Cycle Diesel |
| Emissions/Fuel Strategy | EPA Tier 2, IMO II |
| Length | 7.120 mm |
| Width | 1.961 mm |
| Height | 3.934 mm |
| Weight - Estimated | 8.165 kg |
| Minimum Power | 0 kW |
| Maximum Power | 15.000 kW |
| Maximum Rating | 2.275 kVA |
| Minimum Rating | 2.200 kVA |
| Rated Speed | 1000 rpm (50 hz) or 900 rpm (60 hz) |

This offer is without obligation. The offer is based on our General Terms and Conditions of Sale and Delivery. Changes to equipment and accessories required for technical reasons may be made at any time. Subject to errors, changes and intermediate sale. Statutory value-added tax shall be added to all price.