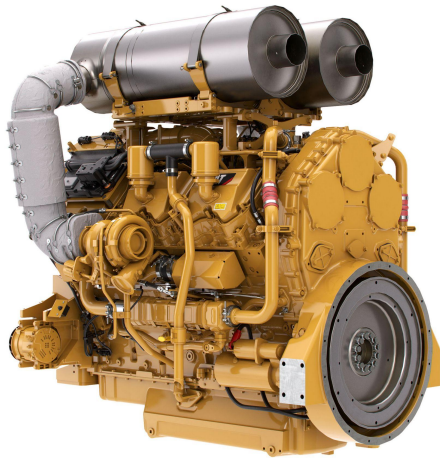


## CAT Cat® C27 Diesel Engine

<https://www.zepelin-powersystems.com/de/en/>



Maximum Power	783 kW
Maximum Torque	4.674 Nm @ 1600 rpm
Rated Speed	1800 rpm
Minimum Power	597 kW
Emissions	U.S. EPA Tier 4 Final
Engine Configuration	V-12
Bore	137,2 mm
Stroke	152,4 mm
Displacement	27 l
Compression Ratio	16.0:1
Aspiration	Twin Turbocharged-Aftercooled (TTA)
Combustion System	Direct Injection
Rotation from Flywheel End	Counterclockwise
Aftertreatment	DOC
Length	1.874 mm
Width	1.600 mm
Height	1.370 mm
Weight - Net Dry - Basic Operating Engine Without Optional Attachments	3.004 kg

This offer is without obligation. The offer is based on our General Terms and Conditions of Sale and Delivery. Changes to equipment and accessories required for technical reasons may be made at any time. Subject to errors, changes and intermediate sale. Statutory value-added tax shall be added to all price.

## CAT Cat® C27 Diesel Engine

