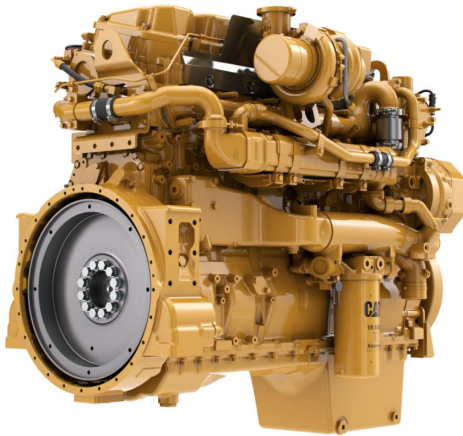


## CAT Cat®-C15 ACERT Diesel Engine

<https://www.zepelin-powersystems.com/de/en/>



Minimum Power	354 kW
Power Range	354-433 kW (264 - 579 bhp)
Maximum Power	433 kW
Emissions	EU Stage V, U.S. EPA Tier 4 Final
Bore	137 mm
Stroke	171 mm
Displacement	15,2 l
Compression Ratio	17,0:1
Rated Speed	1800 - 2100 rpm
Dry Weight	1.542 kg
Length	1.438 mm
Width	943 mm
Height	1.239 mm

This offer is without obligation. The offer is based on our General Terms and Conditions of Sale and Delivery. Changes to equipment and accessories required for technical reasons may be made at any time. Subject to errors, changes and intermediate sale. Statutory value-added tax shall be added to all price.

## CAT Cat®-C15 ACERT Diesel Engine

