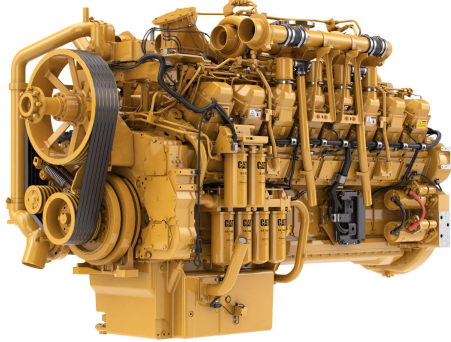


CAT Cat® 3516C Industrial Diesel Engine

<https://www.zepelin-powersystems.com/de/en/>



Maximum Power	1.506 kW
Maximum Torque	10.254 Nm @ 1600 rpm
Rated Speed	1750 rpm
Minimum Power	1.506 kW
Emissions	U.S. EPA Tier 2 Nonroad Equivalent Emission Standards (Not Currently EPA Certified)
Engine Configuration	V-16, 4-Stroke-Cycle Diesel
Bore	170 mm
Stroke	215 mm
Displacement	78 l
Compression Ratio	14.7:1
Aspiration	Turbocharged Aftercooled
Rotation from Flywheel End	Counterclockwise
Aftertreatment	-
Length	3.278 mm
Width	1.530 mm
Height	2.062 mm
Weight - Net Dry - Basic Operating Engine Without Optional Attachments	7.840 kg

This offer is without obligation. The offer is based on our General Terms and Conditions of Sale and Delivery. Changes to equipment and accessories required for technical reasons may be made at any time. Subject to errors, changes and intermediate sale. Statutory value-added tax shall be added to all price.