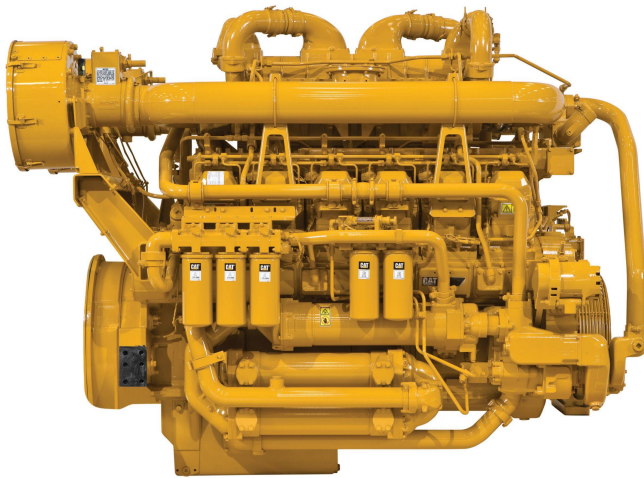


CAT Cat® 3512C Industrial Diesel Engine

<https://www.zepelin-powersystems.com/de/en/>



Maximum Power	1.120 kW
Maximum Torque	7.130 Nm @ 1600 rpm
Rated Speed	1800 rpm
Minimum Power	1.120 kW
Emissions	U.S. EPA Tier 2 Equivalent
Engine Configuration	V-12, 4-Stroke-Cycle Diesel
Bore	170 mm
Stroke	190 mm
Displacement	51,8 l
Aspiration	Turbocharged Aftercooled
Rotation from Flywheel End	Counterclockwise
Aftertreatment	-
Length	3.067 mm
Width	1.785 mm
Height	1.319 mm
Weight - Net Dry - Basic Operating Engine Without Optional Attachments	6.078 kg

This offer is without obligation. The offer is based on our General Terms and Conditions of Sale and Delivery. Changes to equipment and accessories required for technical reasons may be made at any time. Subject to errors, changes and intermediate sale. Statutory value-added tax shall be added to all price.