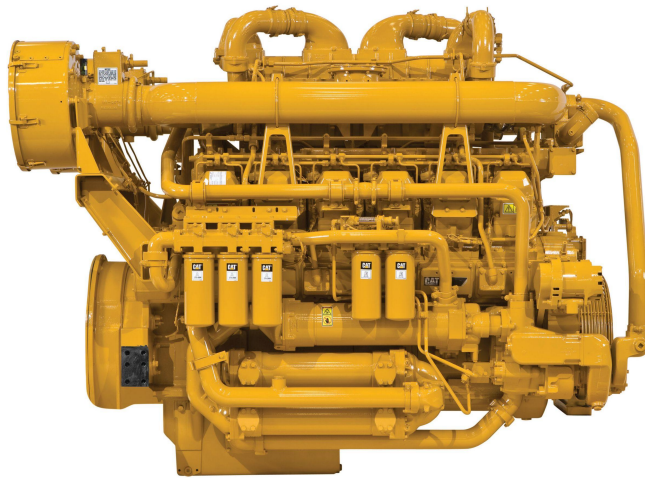


CAT Cat® 3508 Diesel Engine

<https://www.zeppelin-powersystems.com/de/en/>



Maximum Power	746 kW
Maximum Torque	4.263 Nm @ 1600 rpm
Rated Speed	1200-1800 rpm
Minimum Power	507 kW
Emissions	Non-Certified
Engine Configuration	V-8, 4-Stroke-Cycle Diesel
Bore	170 mm
Stroke	190 mm
Displacement	34,5 l
Compression Ratio	13.0:1
Aspiration	Turbocharged Aftercooled
Rotation from Flywheel End	Counterclockwise
Aftertreatment	-
Length	2.136 mm
Width	1.703 mm
Height	1.720 mm
Weight - Net Dry - Basic Operating Engine Without Optional Attachments	4.309 kg

This offer is without obligation. The offer is based on our General Terms and Conditions of Sale and Delivery. Changes to equipment and accessories required for technical reasons may be made at any time. Subject to errors, changes and intermediate sale. Statutory value-added tax shall be added to all price.