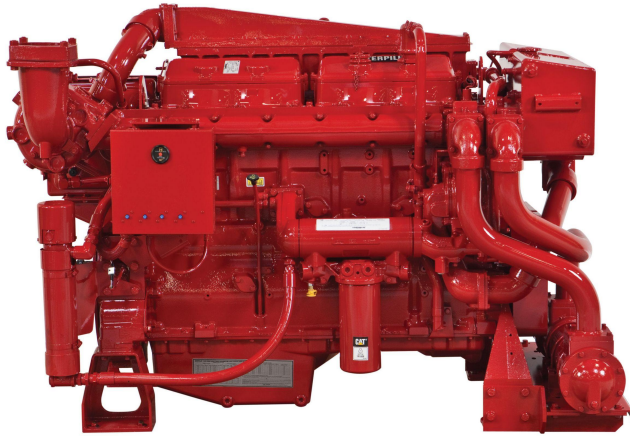


## CAT Cat® 3412C Fire Pump

<https://www.zepelin-powersystems.com/de/en/>



Maximum Power	551 kW
Rated Speed	1750-2100 rpm
Minimum Power	476 kW
Emissions	Non-Certified. Available for global non-regulated areas. Not FM Approved, Not UL Listed
Engine Configuration	V-12, 4-Stroke-Cycle Diesel
Bore	137 mm
Stroke	152 mm
Displacement	27 l
Compression Ratio	14.5:1
Aspiration	Turbocharged Aftercooled (TA)
Rotation from Flywheel End	Counterclockwise
Aftertreatment	-
Length	2.000 mm
Height	1.413 mm
Weight - Net Dry - Basic Operating Engine Without Optional Attachments	2.579 kg
Maximum Input	551 bkW
Maximum RPM	2.100 r/min

This offer is without obligation. The offer is based on our General Terms and Conditions of Sale and Delivery. Changes to equipment and accessories required for technical reasons may be made at any time. Subject to errors, changes and intermediate sale. Statutory value-added tax shall be added to all price.