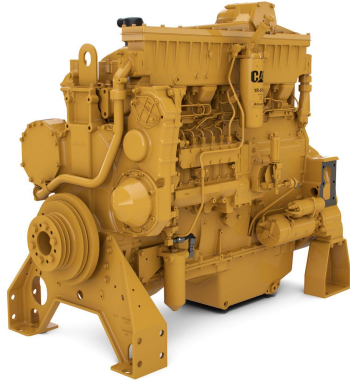


CAT Cat®-3406C Diesel Engine

<https://www.zepelin-powersystems.com/de/en/>



Maximum Power	347 kW
Maximum Torque	2.172 Nm @ 1600 rpm
Rated Speed	1800-2100 rpm
Minimum Power	280 kW
Emissions	Non-Certified
Engine Configuration	Inline 6, 4-Stroke-Cycle Diesel
Bore	137 mm
Stroke	165 mm
Displacement	14,6 l
Compression Ratio	14.5:1
Aspiration	Turbocharged Aftercooled
Rotation from Flywheel End	Counterclockwise
Aftertreatment	-
Length	1.660 mm
Width	906 mm
Height	1.335 mm
Weight - Net Dry - Basic Operating Engine Without Optional Attachments	1.300 kg

This offer is without obligation. The offer is based on our General Terms and Conditions of Sale and Delivery. Changes to equipment and accessories required for technical reasons may be made at any time. Subject to errors, changes and intermediate sale. Statutory value-added tax shall be added to all price.

CAT Cat®-3406C Diesel Engine

