

**CAT C32**



<https://www.zepelin-powersystems.com/de/en/>

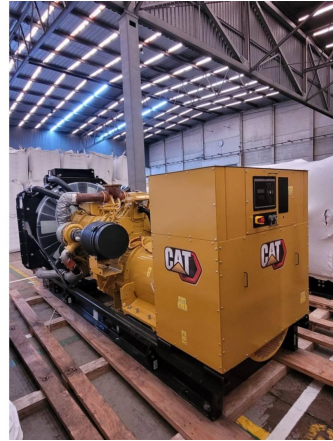
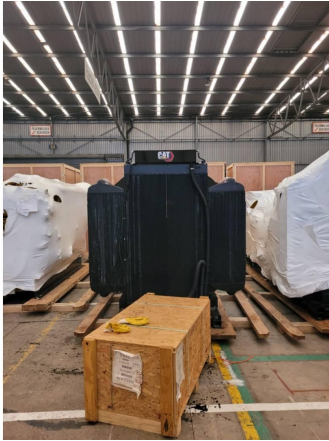
Holger Uphoff  
Phone: +49 4213877560  
Mobile: +49 15209057498  
[holger.uphoff@zepelin.com](mailto:holger.uphoff@zepelin.com)

Reinhard Grünker  
Phone: +49 4213877566  
Mobile: +49 1712322285  
[reinhard.gruenker@zepelin.com](mailto:reinhard.gruenker@zepelin.com)

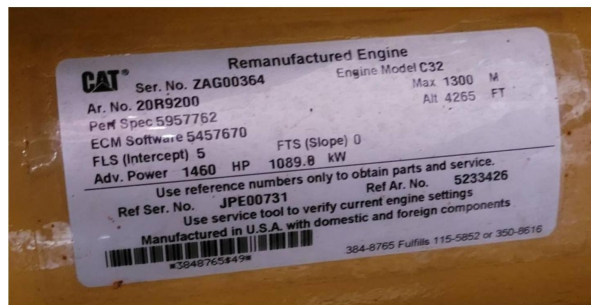
Availability	Available
Certification	No Certification
Code	NCR
Running Hours	0 h
Serial Number	WR300097
Status	Used
G-Number	G006096
Year	2.023
Manufacturer	CAT
Power Dual	false
Power Fuel	Diesel
Frequency	50 Hz
Power	1.000 kW
Rating	1.250 kVA
Type	Standby
Speed	1.500 RPM
Weight	kgs
Voltage	400 V
Postal Code	28.217
City	Bremen
Country	DE

**This offer is without obligation. The offer is based on our General Terms and Conditions of Sale and Delivery. Changes to equipment and accessories required for technical reasons may be made at any time. Subject to errors, changes and intermediate sale. Statutory value-added tax shall be added to all price.**

**CAT C32**



GENERATOR DATA DESCRIPTION	
RATED VOLTAGE	400 V
PHASE	3
WIRE	A LEAD
POWER FACTOR	.8 COS $\phi$
RATED FREQUENCY	60 Hz
RATED CURRENT	1004 A
RATED RPM	1500 RPM
GENERATOR CONNECTION	WYE
CONNECTION CONFIGURATION	SERIES
INSULATION CLASS	H
SUB-TRANSIENT REACTANCE X <sub>d</sub>	1.64 CHMS PER UNIT
TRANSIENT REACTANCE X <sub>d</sub>	.975 CHMS PER UNIT
STEADY STATE REACTANCE X <sub>d</sub>	2.55 CHMS PER UNIT
SYNCHROUS REACTANCE	.324 CHMS PER UNIT
	3.8399 CHMS PER UNIT
	.491 CHMS PER UNIT
ZERO SEQUENCE REACTANCE	.0009 CHMS PER UNIT
	.0045 CHMS PER UNIT
EXCITATION VOLTAGE	95 VOLTS
EXCITATION CURRENT	4.1 AMPS
FRAME	1424
ALTITUDE	1000 M
NEMA TEMPERATURE RISE	150 °C BY RESISTANCE
NEMA AMBIENT TEMPERATURE	40 °C
GENERATOR OVERLOAD PROTECTED BY INHERENT DESIGN	
GENERATOR SN	01F02215
MADE IN	GRIFFIN, GA, USA



**CAT C32**

