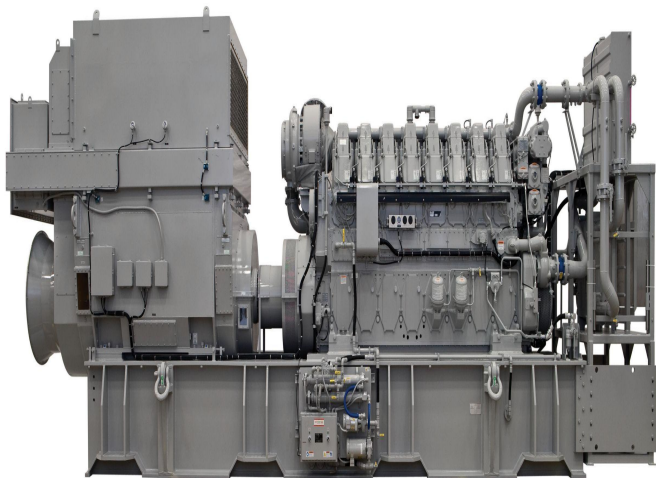


CAT C280-8 Offshore Generator Set

<https://www.zeppelin-powersystems.com/de/en/>



Minimum Rating	2.300 ekW
Maximum Rating	2.710 ekW
Emissions	IMO Tier II/EPA Marine Tier 2
Displacement	148 l
Oil Change Interval	1.000 h
Weight	49.000 kg
Generator Set Control	Generator Monitoring System (GMS)
Aspiration	Turbocharged-Aftercooled
Stroke	300 mm
Engine Control	Electronic ADEM™ A3
Fuel System	EUI
Bore	280 mm
Length	8.140 mm
Height	3.406 mm
Width	2.326 mm
Cooling System - Engine	530 l
Lube Oil System - Refill	1.094 l
Maximum Rating	2.710 kVA
Minimum Rating	2.300 kVA
Rated Speed	1000/900 rpm

This offer is without obligation. The offer is based on our General Terms and Conditions of Sale and Delivery. Changes to equipment and accessories required for technical reasons may be made at any time. Subject to errors, changes and intermediate sale. Statutory value-added tax shall be added to all price.