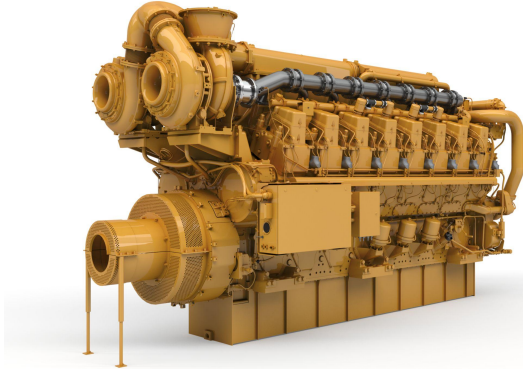


## CAT C280-16 Commercial Marine Propulsion Engine

<https://www.zepelin-powersystems.com/de/en/>



Power Range	6169-7577 bhp (4600-5650 bkW)
Speed Range	900-1000 rpm
Emissions	IMO II
Aspiration	TTA
Bore	280 mm
Stroke	300 mm
Displacement	296 l
Rotation from Flywheel End	Counterclockwise or clockwise
Configuration	Vee 16, 4-Stroke-Cycle Diesel
Minimum Dry Weight	28.500 kg
Minimum Length	5.690 mm
Maximum Length	5.690 mm
Minimum Height	3.403 mm
Maximum Height	3.403 mm
Minimum Width	2.032 mm
Maximum Width	2.032 mm
Minimum Power	4.600 kW
Maximum Power	5.650 kW
Emissions	IMO II

This offer is without obligation. The offer is based on our General Terms and Conditions of Sale and Delivery. Changes to equipment and accessories required for technical reasons may be made at any time. Subject to errors, changes and intermediate sale. Statutory value-added tax shall be added to all price.

## CAT C280-16 Commercial Marine Propulsion Engine

