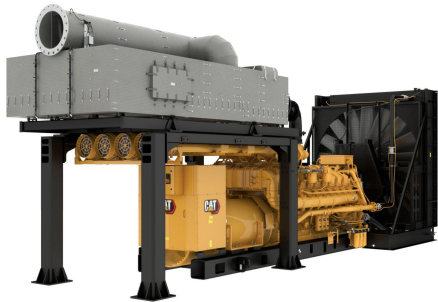


CAT C175-16 Tier 4 Final

<https://www.zepelin-powersystems.com/de/en/>



Minimum Rating	2500 ekW
Maximum Rating	3100 ekW
Emissions/Fuel Strategy	U.S. EPA Certified
Voltage	480 to 13800 Volts
Frequency	60 Hz
Speed	1800 rpm
Duty Cycle	Standby, Mission Critical, Prime, Continuous
Engine Model	C175-16 SCAC, V-16, 4-Stroke Water-Cooled Diesel
Bore	175 mm
Stroke	220 mm
Displacement	84,67 l
Compression Ratio	16:07:01
Aspiration	Turbo Aftercooled
Fuel System	EUI
Governor Type	ADEM™ A4
Length - Minimum	6.166,3 mm
Length - Maximum	7.928,7 mm
Width - Minimum	2.110,1 mm
Width - Maximum	3.123,3 mm
Height - Minimum	2.211,3 mm
Height - Maximum	3.613,3 mm
Dry Weight - Genset (minimum)	19.391 kg
Dry Weight - Genset (maximum)	20.463 kg
Maximum Rating	3.100 kVA
Minimum Rating	2.500 kVA
Rated Speed	1800 rpm

This offer is without obligation. The offer is based on our General Terms and Conditions of Sale and Delivery. Changes to equipment and accessories required for technical reasons may be made at any time. Subject to errors, changes and intermediate sale. Statutory value-added tax shall be added to all price.

CAT C175-16 Tier 4 Final

