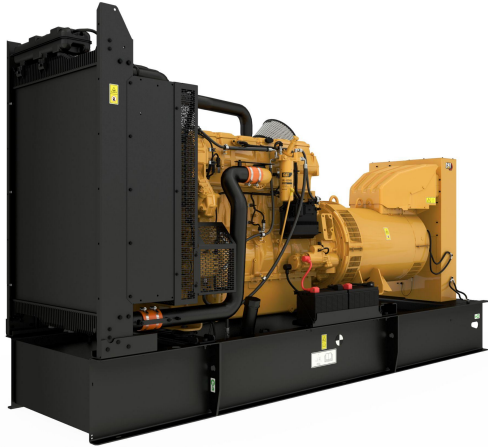


CAT C15 (50 Hz) China Non Road

<https://www.zeppelin-powersystems.com/de/en/>



Minimum Rating	365 kVA
Maximum Rating	550 kVA
Emissions/Fuel Strategy	Low Fuel, Tier 2 or 3
Voltage	208 to 600 Volts
Frequency	50 Hz
Speed	1500 rpm
Duty Cycle	Standby, Prime
Engine Model	C15 ATAAC, I-6, 4-Stroke Water-Cooled Diesel
Bore	137,2 mm
Stroke	171,4 mm
Displacement	15,2 l
Compression Ratio	16.1:1
Aspiration	Air to Air Aftercooled
Fuel System	MEUI
Governor Type	Adem™ A4
Length - Maximum	5.656 mm
Width - Maximum	2.286 mm
Height - Maximum	2.367 mm
Maximum Rating	550 kVA
Minimum Rating	365 kVA
Rated Speed	1500 rpm

This offer is without obligation. The offer is based on our General Terms and Conditions of Sale and Delivery. Changes to equipment and accessories required for technical reasons may be made at any time. Subject to errors, changes and intermediate sale. Statutory value-added tax shall be added to all price.

CAT C15 (50 Hz) China Non Road

