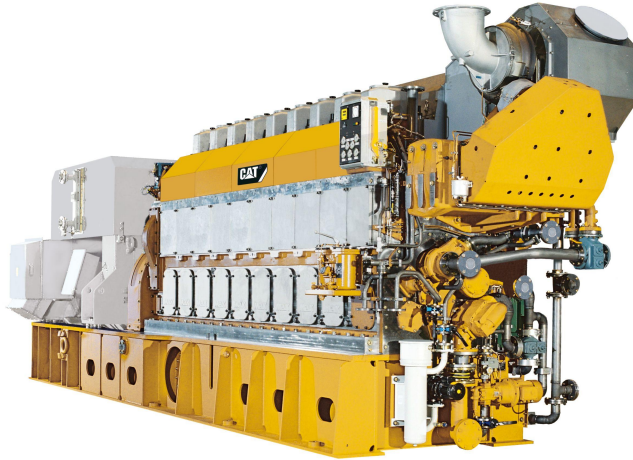


## CAT 8CM32C

<https://www.zepelin-powersystems.com/de/en/>



Minimum Rating	3.880 ekW
Maximum Rating	3.880 ekW
Emissions	IMO Tier II
Displacement	309 l
Generator Set Control	Electronic
Weight	93.000 kg
Bore	320 mm
Stroke	480 mm
Aspiration	Turbocharged-Aftercooled
Engine Control	Electronic
Length	10.886 mm
Width	2.600 mm
Height	5.413 mm
Maximum Rating	3.880 kVA
Minimum Rating	3.880 kVA
Rated Speed	1500 rpm

This offer is without obligation. The offer is based on our General Terms and Conditions of Sale and Delivery. Changes to equipment and accessories required for technical reasons may be made at any time. Subject to errors, changes and intermediate sale. Statutory value-added tax shall be added to all price.