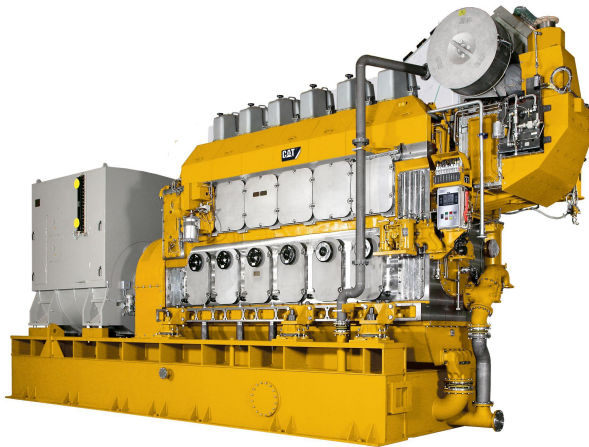


CAT 6CM46DF<https://www.zepelin-powersystems.com/de/en/>

Minimum Rating	5.616 ekW
Maximum Rating	5.616 ekW
Emissions	IMO Tier II
Width	3.382 mm
Aspiration	Turbocharged-Aftercooled
Height	7.281 mm
Engine Control	Electronic
Displacement	608 l
Length	12.800 mm
Bore	460 mm
Stroke	610 mm
Weight	170.001 kg
Maximum Rating	5.616 kVA
Minimum Rating	5.616 kVA
Rated Speed	1500 rpm

This offer is without obligation. The offer is based on our General Terms and Conditions of Sale and Delivery. Changes to equipment and accessories required for technical reasons may be made at any time. Subject to errors, changes and intermediate sale. Statutory value-added tax shall be added to all price.