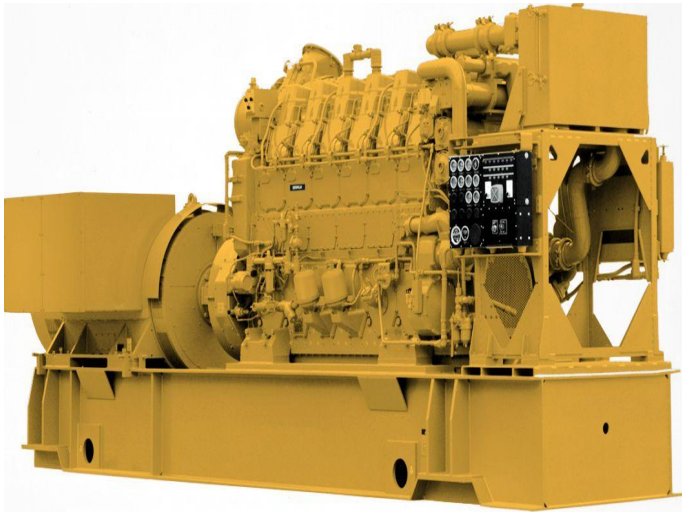


CAT 3606 Generator Set (Medium Speed)



<https://www.zeppelin-powersystems.com/de/en/>

Minimum Rating	1650 ekW
Maximum Rating	2000 ekW
Emissions/Fuel Strategy	Low Fuel Consumption
Frequency	60 Hz
Speed	900 rpm
Duty Cycle	Standby, Prime, Continuous
Engine Model	3606 I-6,4-Stroke Water-Cooled Diesel
Bore	280 mm
Stroke	300 mm
Displacement	6.762 l
Compression Ratio	13:01
Aspiration	TA
Fuel System	Direct unit injection
Governor Type	Generator Set Monitoring System (GMS)
Length - Maximum	10.261,7 mm
Width - Maximum	2.530,3 mm
Height - Maximum	3.977,7 mm
Dry Weight - Genset (maximum)	34.070 kg
Maximum Rating	2.000 kVA
Minimum Rating	1.650 kVA
Rated Speed	900 rpm

This offer is without obligation. The offer is based on our General Terms and Conditions of Sale and Delivery. Changes to equipment and accessories required for technical reasons may be made at any time. Subject to errors, changes and intermediate sale. Statutory value-added tax shall be added to all price.