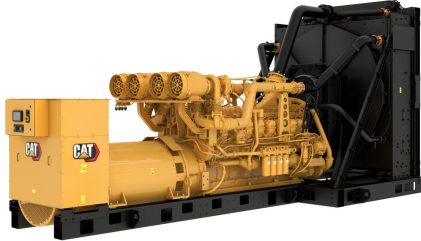


CAT 3516E Low Voltage Generator Set

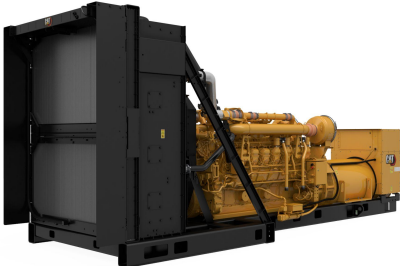
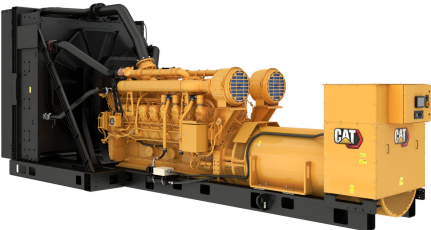
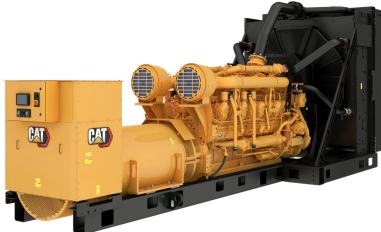
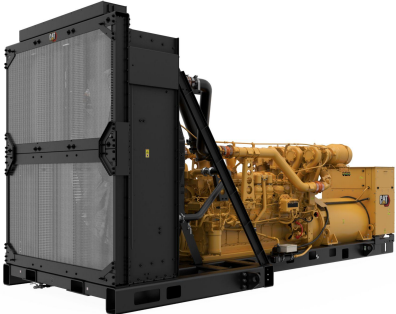
<https://www.zepelin-powersystems.com/de/en/>



Minimum Rating	2500 eKW
Maximum Rating	3000 eKW
Emissions/Fuel Strategy	Tier 2
Voltage	416 to 13,800 Volts
Frequency	60 Hz
Speed	1800 rpm
Duty Cycle	Standby, Mission Critical, Prime
Engine Model	3516E, V-16, 4-Stroke, Water-Cooled Diesel
Bore	170 mm
Stroke	215 mm
Displacement	78,1 l
Compression Ratio	13.9:1 / 14.3:1
Aspiration	ATAAC
Fuel System	MEUI
Governor Type	Adem™ A5
Length - Maximum	7.703 mm
Width - Maximum	2.874 mm
Height - Maximum	3.639 mm
Dry Weight - Genset (maximum)	20.380 kg
Maximum Rating	3.000 kVA
Minimum Rating	2.500 kVA
Rated Speed	1800 rpm

This offer is without obligation. The offer is based on our General Terms and Conditions of Sale and Delivery. Changes to equipment and accessories required for technical reasons may be made at any time. Subject to errors, changes and intermediate sale. Statutory value-added tax shall be added to all price.

CAT 3516E Low Voltage Generator Set



CAT 3516E Low Voltage Generator Set

