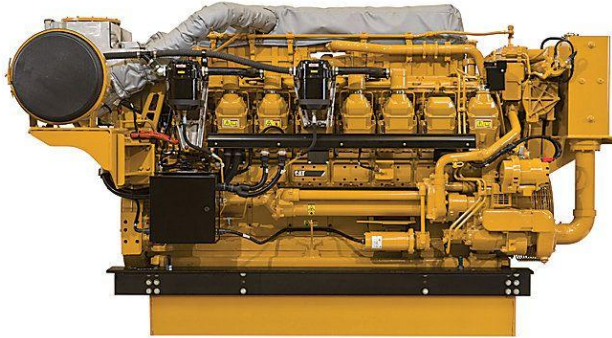


## CAT 3516C Marine Propulsion Engine

<https://www.zeppelin-powersystems.com/de/en/>



Power Range	1650-3386 bhp (1230-2525 bkW)
Speed Range	1200-1800 rpm
Emissions	IMO II
Aspiration	TTA
Bore	215 mm
Stroke	170 mm
Displacement	78 l
Rotation from Flywheel End	Counterclockwise or clockwise
Configuration	Vee 16, 4-Stroke-Cycle Diesel
Minimum Dry Weight	7.961 kg
Minimum Length	3.637 mm
Maximum Length	3.761 mm
Minimum Height	1.967 mm
Maximum Height	2.150 mm
Minimum Width	2.037 mm
Maximum Width	2.142 mm
Minimum Power	1.230 kW
Maximum Power	2.525 kW
Emissions	IMO II

This offer is without obligation. The offer is based on our General Terms and Conditions of Sale and Delivery. Changes to equipment and accessories required for technical reasons may be made at any time. Subject to errors, changes and intermediate sale. Statutory value-added tax shall be added to all price.