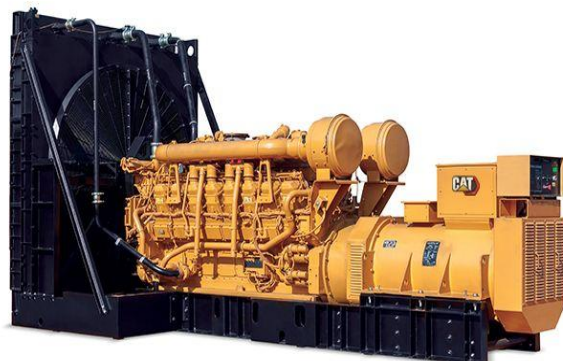


## CAT 3516B (50 Hz) India Market Only

<https://www.zeppelin-powersystems.com/de/en/>



Minimum Rating	2000 kVA
Maximum Rating	2250 kVA
Emissions/Fuel Strategy	Low Fuel Consumption
Voltage	Voltage - Low (415 Volts), Medium and High Voltage
Frequency	50 Hz
Speed	1500 rpm
Duty Cycle	Standby, Prime
Engine Model	3516B TA, V-16, 4-Stroke Water-Cooled Diesel
Bore	170 mm
Stroke	190 mm
Displacement	69 l
Compression Ratio	14.0:1
Aspiration	TA
Fuel System	Electronic unit injection
Governor Type	Adem™3
Maximum Rating	2.250 kVA
Minimum Rating	2.000 kVA
Rated Speed	1500 rpm

This offer is without obligation. The offer is based on our General Terms and Conditions of Sale and Delivery. Changes to equipment and accessories required for technical reasons may be made at any time. Subject to errors, changes and intermediate sale. Statutory value-added tax shall be added to all price.