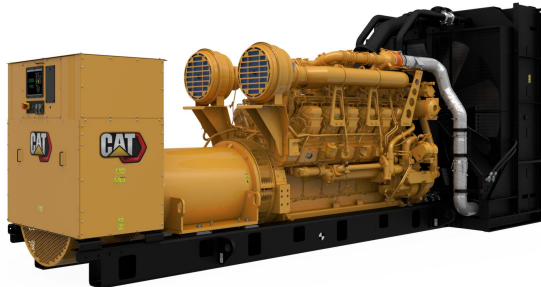


CAT 3512C Generator Set

<https://www.zeppelin-powersystems.com/de/en/>



Minimum Rating	1750 ekW
Maximum Rating	1750 ekW
Emissions/Fuel Strategy	U.S. EPA Cert., Tier 2
Voltage	380 to 13800 Volts
Frequency	60 Hz
Speed	1800 rpm
Duty Cycle	Standby, Mission Critical
Engine Model	3512C ATAAC, V-12, 4-Stroke Water-Cooled Diesel
Bore	170 mm
Stroke	215 mm
Displacement	58,6 l
Compression Ratio	14.7:1
Aspiration	TA
Fuel System	Electronic unit injection
Governor Type	Adem™3
Length - Maximum	6.676,8 mm
Width - Maximum	2.281,2 mm
Height - Maximum	2.794 mm
Dry Weight - Genset (maximum)	14.820 kg
Maximum Rating	1.750 kVA
Minimum Rating	1.750 kVA
Rated Speed	1800 rpm

This offer is without obligation. The offer is based on our General Terms and Conditions of Sale and Delivery. Changes to equipment and accessories required for technical reasons may be made at any time. Subject to errors, changes and intermediate sale. Statutory value-added tax shall be added to all price.

CAT 3512C Generator Set

