

## CAT PPO P33-3



<https://www.zepelin-powersystems.com/de/de/>

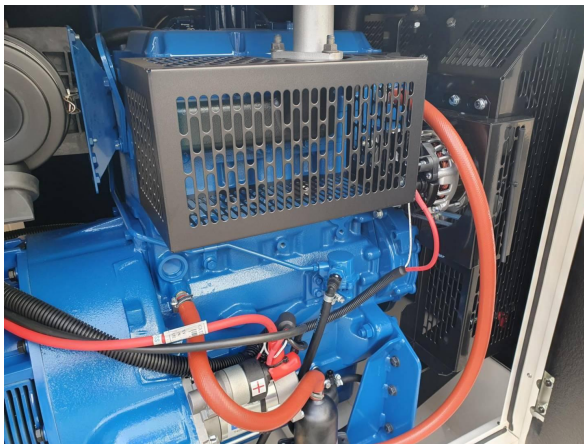
Holger Uphoff  
Telefon: +49 4213877560  
Mobil: +49 15209057498  
[holger.uphoff@zepelin.com](mailto:holger.uphoff@zepelin.com)

Reinhard Grünker  
Telefon: +49 4213877566  
Mobil: +49 1712322285  
[reinhard.gruenker@zepelin.com](mailto:reinhard.gruenker@zepelin.com)

Verfügbarkeit	Available
Zertifikat	No Certification
Code	NCR
Betriebsstunden	0 h
Seriennummer	JSA06317
Status	Used
G-Nummer	G006104
Jahr	2.022
Hersteller	CAT
Antrieb Dual	false
Antrieb Kraftstoff	Diesel
Frequenz	50 Hz
Leistung	26 kW
Rating Art	33 kVA
Rating Art	Standby
Geschwindigkeit	1.500 RPM
Gewicht	kgs
Spannung	400 V
Postleitzahl	28.217
Standort	Bremen
Land	DE

Dieses Angebot ist freibleibend. Grundlage dafür sind unsere Allgemeinen Verkaufs- und Lieferbedingungen. Technisch bedingte Änderungen an Geräten und Zubehör sind jederzeit möglich. Irrtümer, Änderungen und Zwischenverkauf vorbehalten. Alle Preise verstehen sich zzgl. gesetzlicher MwSt.

**CAT PPO P33-3**



Caterpillar (N) Limited		ISO 8528	
<p>616 Glenworth Road, Larnac, Co. Antrim BT48 1EJ            Northern Ireland, United Kingdom            Tel: +44 (0) 28 26261000 Fax: +44 (0) 28 26261111            www.PGWilson.com</p>			
<p>MANUFACTURER: Caterpillar (N) Limited            MODEL: P33-3            SERIAL NO: 5098227VJ548317            SALES ORDER REF: 500461180            MONTH/YEAR OF MANUFACTURE: 08/2022            AMBIENT TEMP: 20 °C</p>		<p>GENERATING SET</p>	
<p>STANDBY: 23 kVA            PRIME: 20.4 kVA            RATED POWER: 24 kVA            RATED VOLTAGE: 400/230 V            PHASE: 3            RATED POWER FACTOR: 0.8 Cos φ            RATED FREQUENCY: 50 Hz            RATED CURRENT - STANDBY: 48 A            RATED CURRENT - PRIME: 45 A            RATED RPM: 1500 rpm            ALTITUDE: 100 m            ALTERNATOR CONNECTION: 5.0TAN            ISO 8528-3 TESTING: P6            ALTERNATOR ENCLOSURE: 70 IP            INSULATION CLASS: F            EXCITATION VOLTAGE: 22.8 V            EXCITATION CURRENT: 3.20 A            BASE: 892 kg            DIMENSIONS LxWxH: 1500x920x1380 mm</p>	<p>Perkins            ENGINE FAMILY: 1100A-33            DISPLACEMENT: 3.289            MODEL YEAR: 2022            LIST NUMBER: 63274905            SERIAL NUMBER: D4320183853359</p> <p>INFORMATION APPLICABLE TO USA ONLY            THIS ENGINE IS SPECIFICALLY DESIGNED FOR EXPORT AND USE IN THE UNITED STATES OF AMERICA. IT DOES NOT MEET THE EMISSION STANDARDS AND REGULATIONS APPLICABLE TO THE UNITED STATES.</p> <p>INFORMATION APPLICABLE TO CANADA ONLY            THIS ENGINE IS SPECIFICALLY DESIGNED FOR EXPORT AND USE IN CANADA. IT DOES NOT MEET THE EMISSION STANDARDS AND REGULATIONS APPLICABLE TO CANADA.</p> <p>INFORMATION APPLICABLE TO CHINA ONLY            THIS ENGINE IS SPECIFICALLY DESIGNED FOR EXPORT AND USE IN CHINA. IT DOES NOT MEET THE EMISSION STANDARDS AND REGULATIONS APPLICABLE TO CHINA.</p>		



**CAT PPO P33-3**

