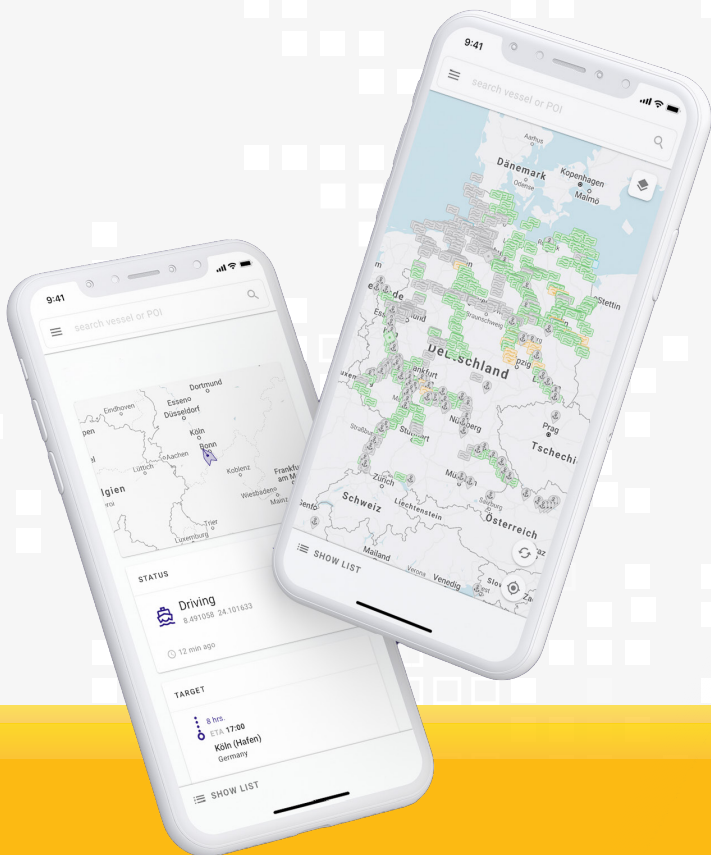


# VISUALIZATION



## YOUR ENGINE AND SYSTEM DATA AT A GLANCE WITH OUR AEC.view WEB PORTAL

All technical assets at a glance by using our digital service module “Visualization”. Our customizable AEC.view web portal provides you with data and comprehensive information about your connected assets. You will get deep insights into the performance of your fleet from the data provided. Access everything – from a complete overview of all assets to detailed information about an individual engine – irrespective of location and almost in real time.



## CUSTOMIZED CONFIGURATION

AEC.view provides access to engine and operating data at any time. You can create your own dashboard. The wide range of options extends from basic engine data to points of interest such as branch offices or bunker stations – with integration of third-party systems. Our web portal delivers a great overview of all connected vehicles.

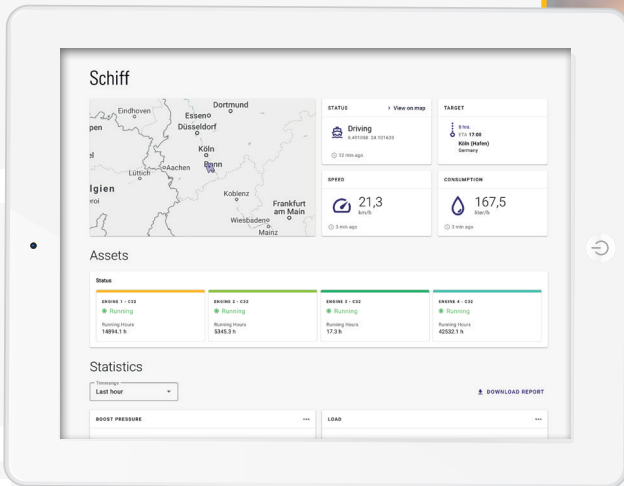
**ZEPPELIN**  
Power Systems



## DATA ANALYSIS

You can screen your system and engine data using almost real-time data:

Our AEC.view web portal makes your workflow easier and faster.



## YOUR BENEFITS

- ★ Display of location and operating data
- ★ Complete overview of your fleet
- ★ Customizable dashboards
- ★ Alarm, event and fault messages from engines
- ★ Limit value monitoring and configurable notifications
- ★ Monthly status reports
- ★ Integration of external data sources

### Requirements:

For full functionality, you need the corresponding AEC hardware.



## YOUR CONTACT AT ZEPPELIN POWER SYSTEMS

### Service-Helpdesk

0800 589 27 87

(from outside Germany: +49 40 853 151-222)

[zps-foc-helpdesk@zeppelin.com](mailto:zps-foc-helpdesk@zeppelin.com)

[zeppelin-powersystems.com/digital](https://zeppelin-powersystems.com/digital)